

SOUNDTEX 5.0

LIGHT COMMERCIAL
VINYL
FLOOR COVERING

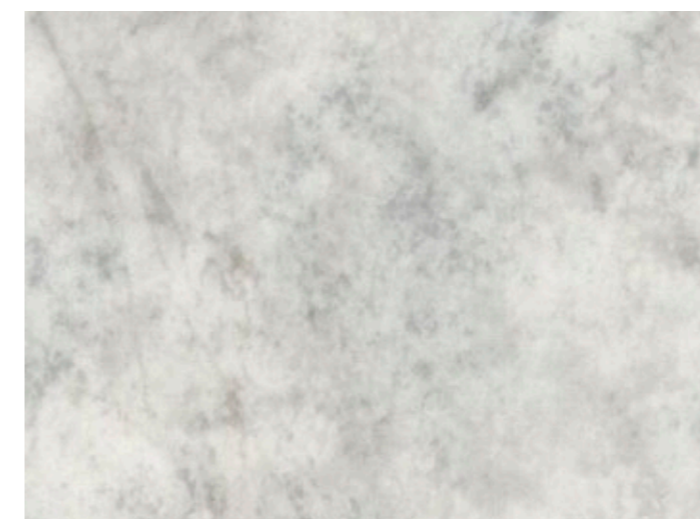
SOUNDTEX 5.0 MARBLE



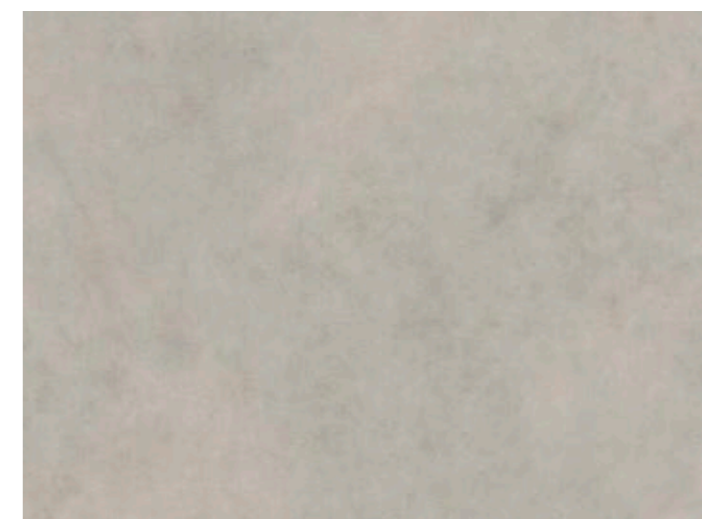
4547-505-4 ◀ 2 | 4 m



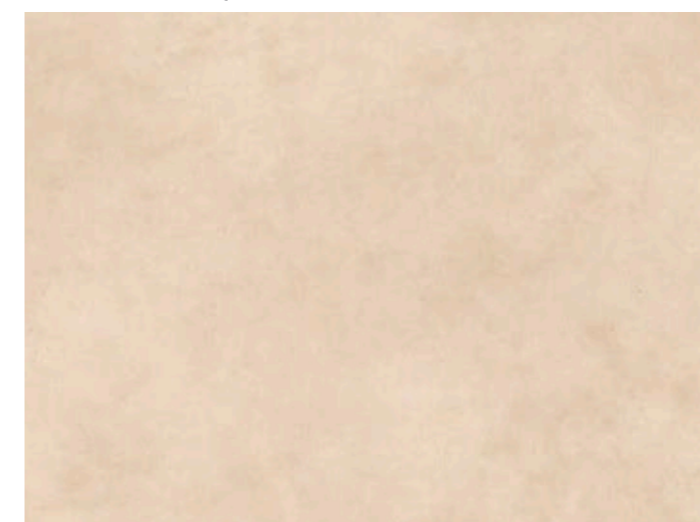
4261-472-3 ◀ 3 m



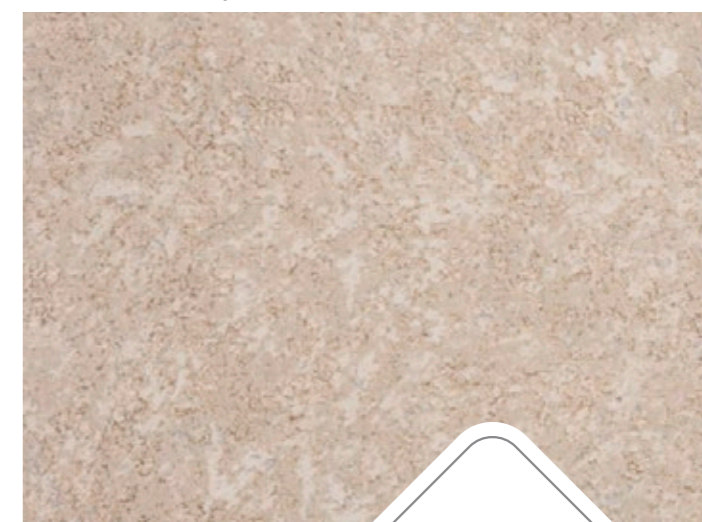
4547-511-4 ◀ 2 | 4 m



4547-510-4 ◀ 2 | 4 m



4547-509 ◀ 2 | 4 m



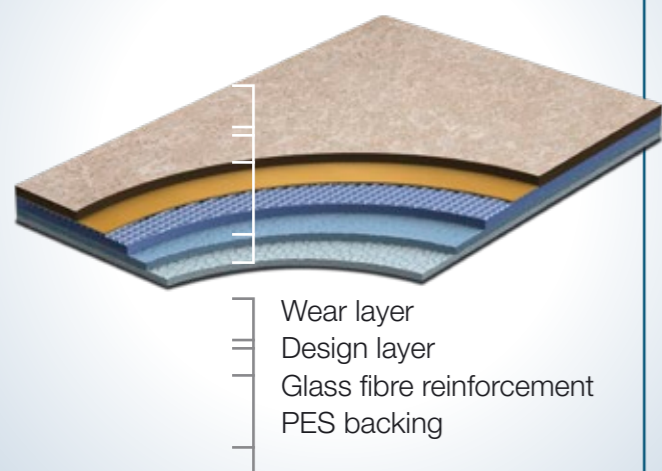
4261-451-3 ◀ 2 | 4 m

Grabo SOUNDTEX 5.0 floorings combine good technical characteristics with extra design features. The product ensures excellent residual indentation, good comfort feeling, and thanks to the non-woven backing it can be installed without glue, which allows easier and quicker installation, especially in renovation projects.

RECOMMENDED USAGE

Nursery homes | Preschools | Libraries
Dormitory rooms

CONSTRUCTION



DESCRIPTION

Construction		heterogeneous
Total thickness	EN ISO 24346	3,2 mm
Wear layer thickness	EN ISO 24340	0,5 mm
Width of roll	EN ISO 24341	2 3 4 m
Standard length of rolls	EN ISO 24341	25 lm
Normal length of rolls	EN ISO 24341	18-27 lm
Total weight	EN ISO 23997	2,2 kg/m ²

CLASSIFICATION

Classification	EN 685	class: 23/33/42
----------------	--------	-----------------

PERFORMANCE

Residual indentation	EN ISO 24343	max. 0,2 mm
Dimensional stability	EN ISO 23999	max. 0,2 %
Fire resistance	EN 13501-1	class: Cfl-s1
Slip resistance	EN 13893	class: R9
Light fastness	EN 20105 B02	grade 6
Abrasion group	MSZ EN 660-1	T
Castor chair resistance	EN ISO 4918	✓
Warranty		7 year

SOUNDTEX 5.0 NATURAL



4235-452-5 ◀ 2 | 4 m



4259-501-5 ◀ 2 | 4 m



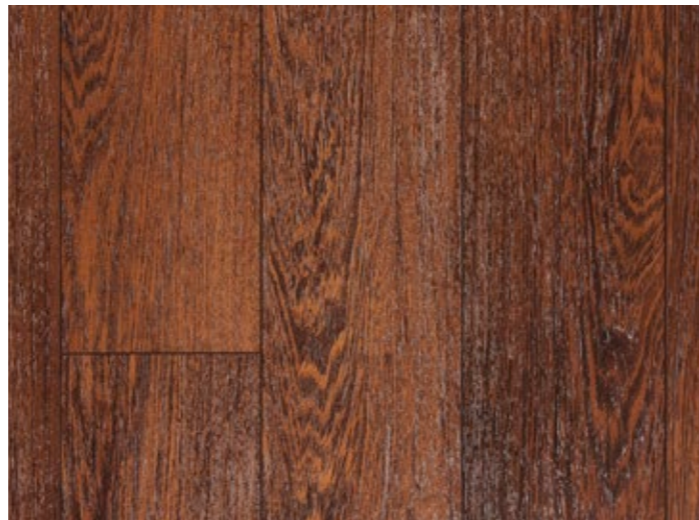
4235-456-5 ◀ 2 | 4 m



4266-453-4 ◀ 2 | 3 | 4 m



4235-469-5 ◀ 2 | 4 m



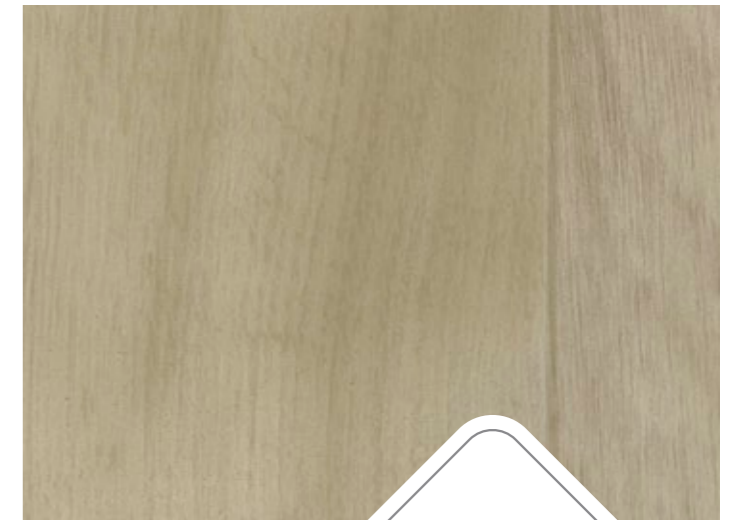
4262-467-4 ◀ 2 | 3 | 4 m



4259-504-5 ◀ 2 | 4 m



4263-482-4 ◀ 2 | 3 | 4 m



4259-503-5 ◀ 2 | 4 m